



6000 Waste Tank

WASTE TANK



Waste Tank | 6000 Litre

Certified steel frame to 8000kg

The **6000 Litre Waste Tank** has a certified steel frame to 8000kg. We designed and built these tanks strong to sit under your ablution block.

Features

- Certified steel frame to 8000kg
- Zinc coated frame to prevent rust
- Reinforced bracing for stability
- 6 Attachment points for easy transportation
- Forklift pockets for loading
- 4 x lifting points (lift empty only)
- Made from ultra violet resistant high density polyethylene
- Convex tank for extra strength and water run off

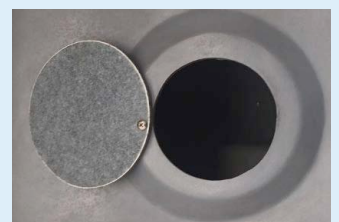
Specifications

Certified steel frame to	8000 kg
Dimensions	5900mm(L) x 2300mm(W) x 700mm(H)
Waste tank capacity	6000 Litres

*Approximate measurements only



Forklift Pockets



Inspection Port

Optional Accessories

Our staff are both knowledgeable and helpful and understand that different situations require different setups. Feel free to call and discuss with our friendly staff about customising your toilet to meet your requirements.



Solenoid shutoff valve



Hose Connector for Solenoid



Float Lead for Waste Tank Alarm



Waste Tank Alarm